

# **NOTAM**

## **CUSTOM SOLUTIONS**

### **Diagnosing the Turbosmart E-Boost 2**

#### **APPENDIX 1: Recalibrating the E-Boost 2**

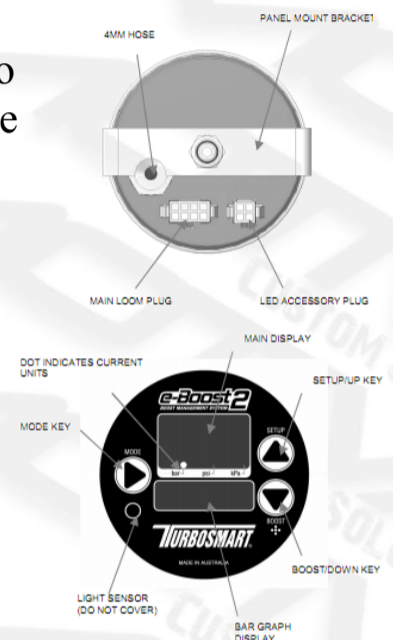
The Turbosmart E-Boost 2 is factory calibrated at 0.0 gauge pressure at standard atmospheric pressure and temperature. The E-Boost 2 will self-compensate for most altitudes, but a large change in ambient temperature can cause the display to read above or below zero even without any pressure or vacuum is applied to the E-Boost 2 boost reference source.

1) Power on the E-Boost 2 and allow it to complete the startup sequence. Ensure that no pressure is being applied to the E-Boost 2's 4m pressure reference port located on the back of the unit

2) After the E-Boost 2 is powered up, hold the **Mode** key and then press **Setup** key  
The E-Boost 2 will enter the Setup Menu  
"obS" or "OVER BOOST SHUTDOWN" will be the first Menu

- Press the **Setup** key until the Display reads "ZE r"

**ZE r (Gauge Zero)**



**IMPORTANT: \*\*\*ENSURE THERE IS NO TRAPPED VACUUM OR PRESSURE ON THE E-Boost 2's Pressure reference port (4mm barb fitting on back of head unit)\*\*\***

- Press the **Mode** key on "ZE r" then press the **Setup** key to "yES" then press **Mode**
- Press and hold the **Mode** key until the display reads "End"
- Power Cycle the E-Boost 2

3) After the E-Boost 2 completes the startup sequence the display should now read 0.0 with the engine off

#### **APPENDIX 2: Factory Resetting the E-Boost 2**

If all troubleshooting procedures fail, the final option for E-boost 2 repair is factory resetting the unit. This should be considered a last resort option as it will delete and any information or parameters stored in the unit itself.

1) Power on the E-Boost 2 and allow it to complete the startup sequence. Ensure that no pressure is being applied to the E-Boost 2's 4m pressure reference port located on the back of the unit

2) After the E-Boost 2 is powered up, hold the **Mode** key and then press **Setup** key  
The E-Boost 2 will enter the Setup Menu  
"obS" or "OVER BOOST SHUTDOWN" will be the first Menu

- Press the **Setup** key until the Display reads "rES"

**rES (Reset)**



**IMPORTANT: \*\*\*ENSURE THERE IS NO TRAPPED VACUUM OR PRESSURE ON THE E-Boost 2's Pressure reference port (4mm barb fitting on back of head unit)\*\*\***

- Press the **Mode** key on "rES" then press the **Setup** key to "yES" then press **Mode**
- Press and hold the **Mode** key until the display reads "End"
- Power Cycle the E-Boost 2

3) The E-Boost 2 should now be reset to factory settings